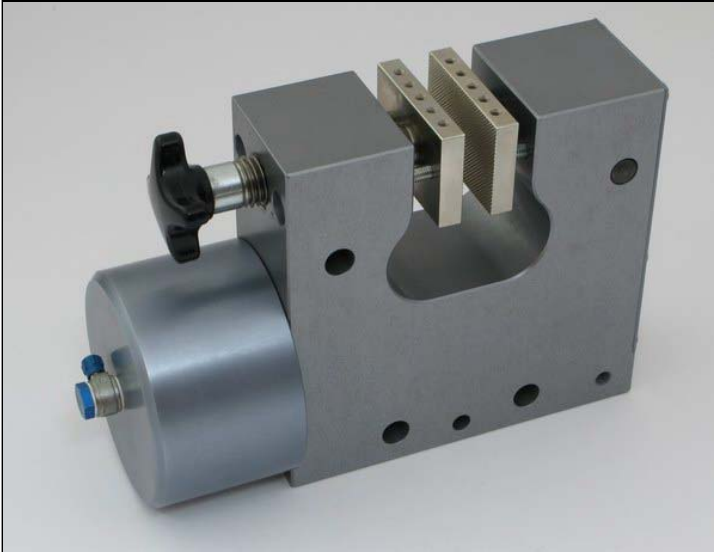


Universal Pneumatic Grip

High Capacity Pneumatic Clamps



These universal grips feature an air operated clamping piston that closes one jaw via an internal lever arm with adjustments for three different sample thickness ranges. The air operated jaw then closes against a manually adjustable face jaw. The grips feature several save sample loading time with quick and easy specimen insertion.

Maximum clamp load is 3500 pounds (16 kN) deliverable with an air pressure of 100 psi (7 bar). Maximum air pressure capacity is 140 psi (10 bar).

An air kit is optional with foot pedals or hand switches and tubing.

A wide selection of interchangeable jaws is available.

