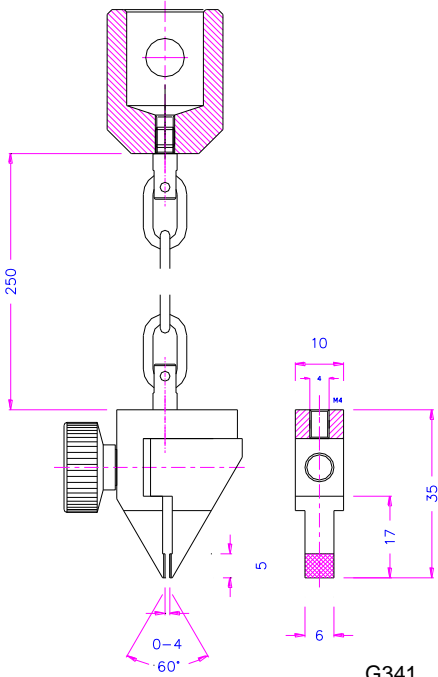
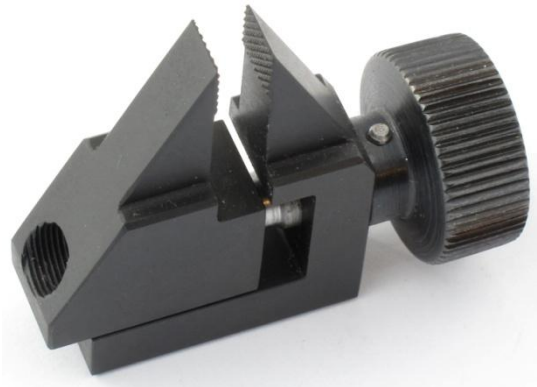


G341 Mechanical Vice Grip
Rated to 100 N (22 lb)

Model G341	
Maximum Force	100 N (22 lb)
Opening Range	0-4 mm
Jaws	Serrated, 0.6 x 45°
Clamp Size	5mm x 6mm
Body of Grip	Hardened steel, phosphate coating
Temperature Range	0° to 130° C
Weight	95 grams

Screw action, or manual mechanical vice style grips provide a simple and effective way of gripping test specimens. These grips are versatile and easy to use. They are applicable for small components, such as for electronics. Chain mounting enables flexible positioning.

Note: Optional adapters or mechanical connections available for all test machines.



G341

G341 Custom Design Examples



G341 with M8 coupling



G341-M5-F



G341-F



G341-15 special design
clamping surface 15mm wide