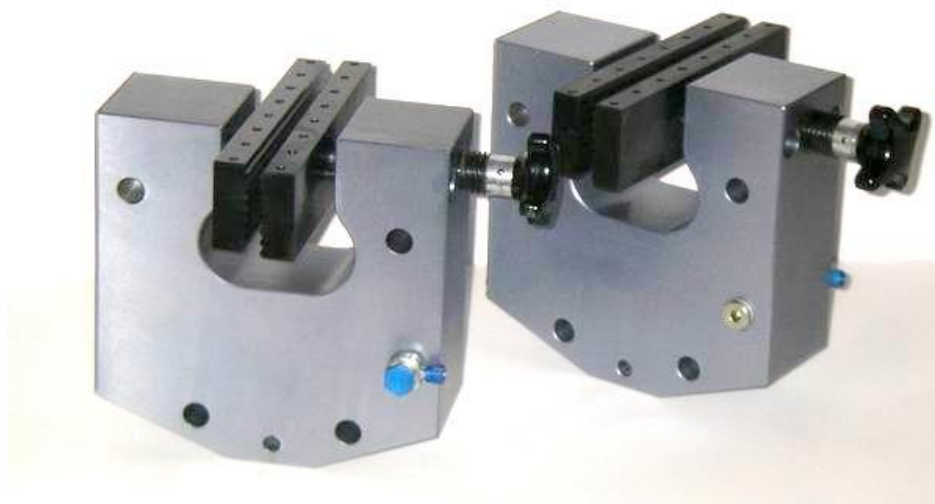
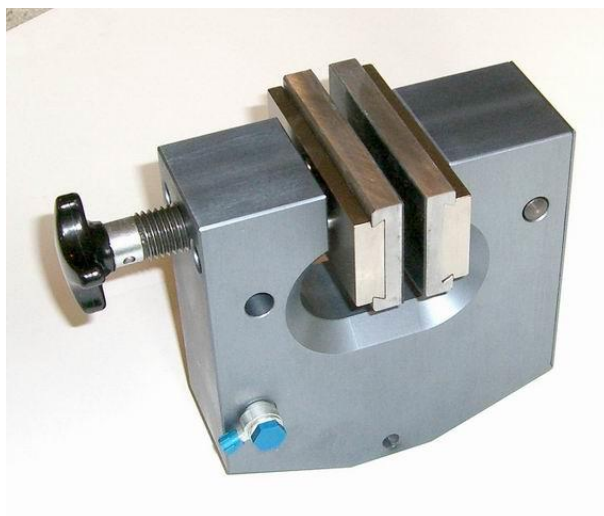
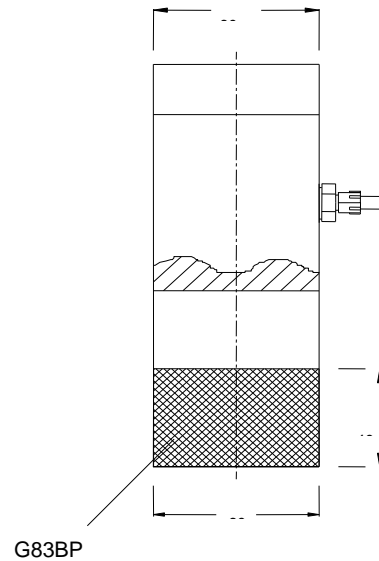
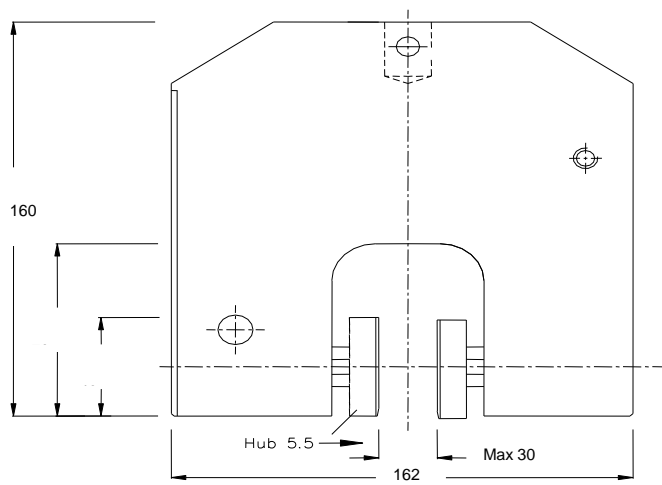


Pneumatic Vise Grips**Clamp load 1575 lb (7 kN)****Rated 787 lb (3.5 kN) at 100 psi**

These air operated grips clamp test samples via an internal actuated lever arm built into the grip body. The result is a constant clamp force maintained on the specimen, even if the sample creeps or necks down during the test.

Pneumatic grips enable the user to set the air pressure at the desired clamp load, and to repetitively reapply that load to a batch of test samples. The grips can be opened and closed in a handless operation using foot pedals that trigger the air cylinders. These grips can be configured with Teflon seals to handle testing in environments to 250C. Clamp force is 1500 pounds (7 kN) at 100 psi. In cases where higher air pressure is available (220 psi max), clamp load of more than 3000 pounds is possible.





JAW Model	Description
J83B	Smooth Surface jaws 40x60mm
J83BG	Rubber Faced jaws 40x60 mm
J83BP	Serrated Diamond 1x45° jaws 40x60mm
J83BW	Wave jaws 40x60mm
J83BV	V-jaws for round samples 8-30 Ø mm 40x60mm
J83BD	Diamond Grit jaws 40x60mm
J83BWC	Wave jaws Stainless Steel 40x60mm
J83B100	Smooth Surface jaws 40x100mm
J83BG100	Rubber Faced jaws 40x100mm
J83BP100	Serrated Diamond 1x45° jaws 40x100mm
J83BW100	Wave jaws 40x100mm
J83BV100	V-jaws 40x100mm
J83GT	Carrier for inset jaws (4 carriers)
J83EB	Smooth Surface inset jaws 40x60 mm
J83EBG	Rubber Faced inset jaws 40x60 mm
J83EBP	Serrated Diamond 1x45° (serrated) inset jaws 40x60 mm
J83EBW	Wave inset jaws 40x60 mm
J83EBD	Diamond coated inset jaws, 40x60 mm
J83EB100	Smooth Surface (smooth) inset jaws 40x100 mm
J83EBG100	Rubber Faced inset jaws 40x100 mm
J83EBP100	Serrated Diamond 1x45° (serrated) inset jaws 40x100 mm
J83EBW100	Wave inset jaws 40x100 mm
J83EBD100	Diamond coated inset jaws, 40x100 mm
J83BWC	Jaws, 40x60, water cooled for asphalt