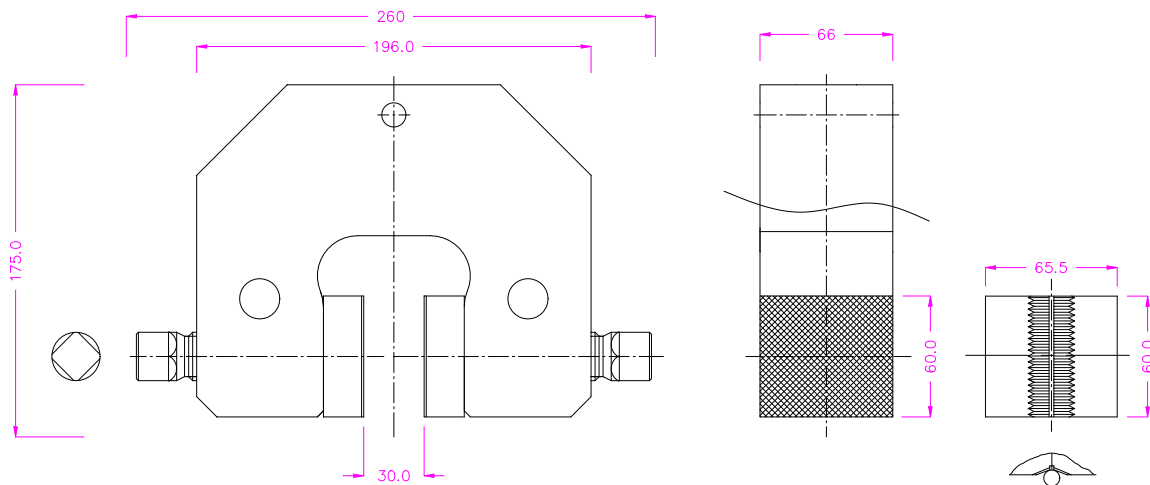


Mechanical Vise Grips

Screw action grips offer a simple and efficient method for holding test specimens that don't require the same exact clamp force from sample to sample. These grips offer one adjustable grip face to compensate for varying sample thickness so that the line of tensile force can be made to coincide with the center of the grip. The other face clamps against the test sample.


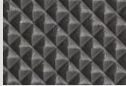

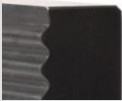

A wide selection of interchangeable grip jaw faces in various sizes and surfaces are offered -- such as smooth surface, rubber coated, serrated, V wedge for round samples (e.g. wire), wave action for textiles, and diamond surfaces for hard samples. Line contact and special coated faces are also available. These grips are good for tensile, static and tension-tension cyclic tests. They are not good for high cycle fatigue tests. Specimen types include components, thin sheets, films, foils, threads, plastic tapes, wires, fabric and soft materials.



Model	G90
Tensile force	50 kN (11250 lb)
Temperature range	0°C - +180°C
Body	Steel, manganese phosphate coating

Item No.	Surface	Clamping surface H x W	Jaw Opening
G90-B	Blank (smooth) jaws	60 x 66 mm	0 – 30 mm (1.2 in)
G90-BP	Pyramid jaws (serrated)	60 x 66 mm	0 – 30 mm (1.2 in)
G90-BV	V-jaws	60 x 66 mm	5 – 30 mm Ø
G90-BW	Wave jaws	60 x 66 mm	0 – 30 mm (1.2 in)
G90-BD	Diamond jaws	60 x 66 mm	0 – 30 mm (1.2 in)
G90-B210	Blank (smooth) jaws	70 x 210 mm	0 – 10 mm (0.4 in)
G90-BP210	Pyramid jaws (serrated)	70 x 210 mm	0 – 10 mm (0.4 in)
G90-BW210	Wave jaws	70 x 210 mm	0 – 10 mm (0.4 in)

Jaws with other dimensions and surface coatings on request

	Blank jaws <ul style="list-style-type: none"> • Suitable for own further treatments • Steel-blanks without coating
	Pyramid jaws <ul style="list-style-type: none"> • Pyramids 1.2x45° • Hardened steel 58HRC manganese phosphated
	V-jaws <ul style="list-style-type: none"> • For all kinds of round samples • Tooth pitch 1.2 mm • Hardened steel 58HRC manganese phosphated
	Wave jaws <ul style="list-style-type: none"> • For flexible materials • Wave 5 mm • Hardened steel 58HRC manganese phosphated
	Diamond jaws <ul style="list-style-type: none"> • Clamping surface coated with synthetic diamonds • Nickel-plated

