

## GB5-250 Series Fracture Mechanics Clevis Grips

### Overview

GB5-250 Series Fracture Mechanics Clevis Grips are designed for static and dynamic testing of compact tension specimen in accordance with relevant ASTM standard practices. The fracture toughness tests such as  $K_{Ic}$ ,  $J_{Ic}$  and CTOD can be conducted using these clevises in accordance with ASTM E399, E647 and E1820.

To meet the test requirements for specimens of varying width and thickness, a series of clevis grips with varying sizes are available. Standard grips are rated from 0 °C to 100 °C (32°F to 212°F) for low temperature and elevated temperature applications. Models are available that will accommodate temperature ranges from -70 °C to 1000 °C (-94°F to 1832°F).

### Features

- Rugged
- Compatible with a broad temperature range
- Compatible per ASTM E399, E647 and E1820
- Adapters available for all brands of test machines
- Available in many sizes



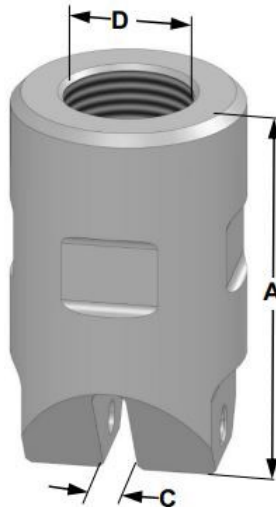
### Specifications

Model	Specimen Width	Pin Diameter	Specimen Thickness
Application for Room temperature to 100 °C (212°F)			
GB5-201	25.4 mm (1 in)	6.3 mm (0.248 in)	6.35 mm (0.25 in)
GB5-202	25.4 mm (1 in)	6.3 mm (0.248 in)	12.5 mm (0.49 in)
GB5-203	50.8 mm (2 in)	12.7 mm (0.5 in)	12.5 mm (0.49 in)
GB5-204	50.8 mm (2 in)	12.7 mm (0.5 in)	25.4 mm (1 in)
Application temperature range up to 1000 °C (1832°F)			
GB5-251	25.4 mm (1 in)	6.3 mm (0.248 in)	6.35 mm (0.25 in)
GB5-252	25.4 mm (1 in)	6.3 mm (0.248 in)	12.5 mm (0.49 in)
GB5-253	50.8 mm (2 in)	12.7 mm (0.5 in)	12.5 mm (0.49 in)
GB5-254	50.8 mm (2 in)	12.7 mm (0.5 in)	25.4 mm (1 in)
GB5-2xx	Made per specifications		

## Dimensions

Model	A	C	D (Stud Size)
Application for Room temperature to 100 °C (212°F)			
GB5-201	100 mm (3.94 in)	6.6 mm (0.26 in)	M27X2*
GB5-202	100 mm (3.94 in)	13.2 mm (0.52 in)	M27X2*
GB5-203	100 mm (3.94 in)	13.2 mm (0.52 in)	M27X2*
GB5-204	100 mm (3.94 in)	26 mm (1.02 in)	M27X2*
Application temperature range up to 1000 °C (1832°F)			
GB5-251	100 mm (3.94 in)	6.6 mm (0.26 in)	M27X2*
GB5-252	62.5 mm (2.46 in)	13.2 mm (0.52 in)	M27X2*
GB5-253	62.5 mm (2.46 in)	13.2 mm (0.52 in)	M27X2*
GB5-254	82 mm (3.23 in)	26 mm (1.02 in)	M27X2*
GB5-2xx	Made per specifications		

*\*Other sizes are available*



Contact an application engineer to configure a solution to your application requirements.