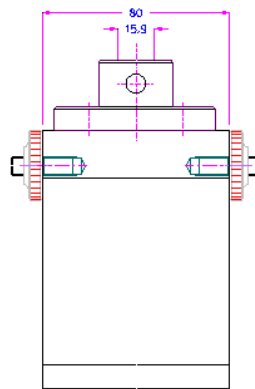
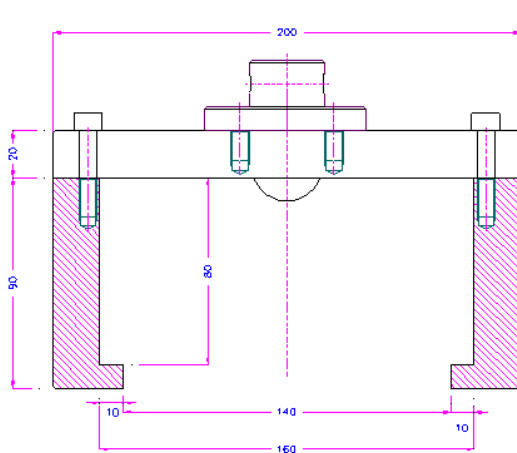


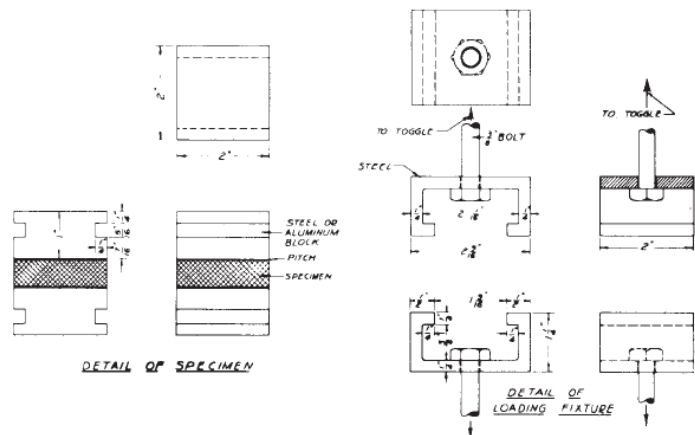
## G16 Tensile Test Fixture per ASTM D1037

*Tensile Test Device Requirements* – ASTM D1037 describes test fixtures used in determining the tensile strength properties of wood-base fiber and particle panel materials. The G16-D1037 meets these requirements

For tensile tests perpendicular to the surface, the G16 grip is designed to meet the maximum distance from the center of the universal joint or self-aligning head to the glued surface of the specimen as specified in ASTM D1037.



**G16 Test Fixtures are made per exact ASTM1037 requirements**



**Tensile Testing Fixture Line Drawing taken from ASTM D1037**

Contact an application engineer to configure a solution to your application requirements:  
1-800-430-6536

**Reference:** ASTM Standard D 1037, 1999, "D1037 Standard Test Methods for Evaluating Properties of Wood-Base Fiber and Particle Panel Materials," ASTM International, West Conshohocken, PA, 2007, [www.astm.org](http://www.astm.org).