

## **G240KB-D751 Vice Action Grips per ASTM D751**

### **Grab Test Break Strength of Coated Plastics**

### **Special Smooth Surface Jaw Clamps**

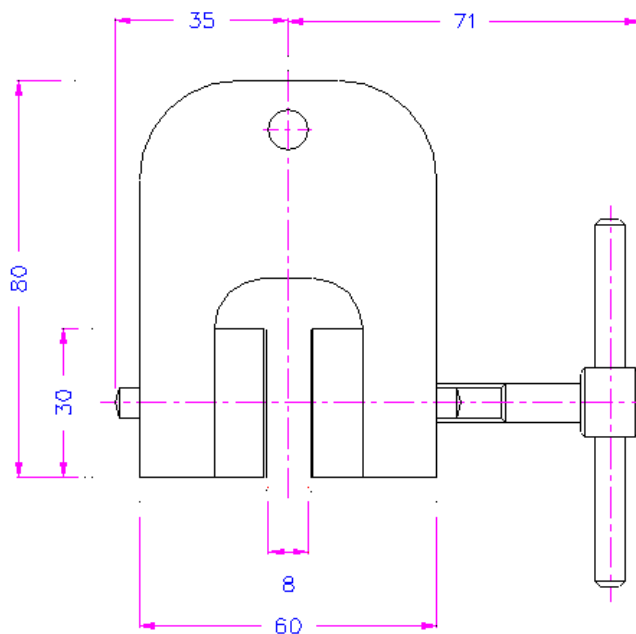
G240KB-D751 meets requirements of ASTM D751. The breaking strength of coated plastics is determined using procedure A - the grab test method.

According to ASTM D751, the clamps for holding a specimen of coated fabric must have smooth, flat, and parallel metallic gripping surfaces to avoid slippage. The dimension of all gripping surfaces parallel to the direction of application of the load must be 25 mm (1 in.); the dimension perpendicular to this direction shall be 1 inch for the face jaw and 50 mm (2 in.) or more for the other. All edges that might cause a cutting action shall be rounded to a radius of not over 0.4 mm (1/64 in.). The design of the clamp shall be such that one gripping surface shall be an integral part of the rigid frame of the clamp while the other shall be on a part hinged or swiveled to the movable member of the clamp. The distance between the clamps at the start of the test shall be 75 mm (3 in.).

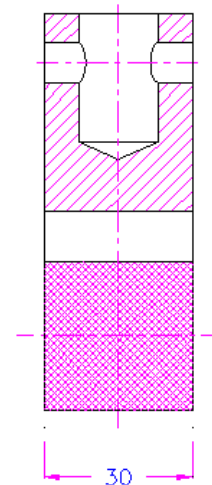
Contact an application engineer to configure a solution to your application requirements.



**G240KB Jaws and Grips for Strength Testing Fixtures per ASTM**



**G240K Grip with Jaws**



**Reference** ASTM Standard D 751, 2002, "D751 Standard Test Methods for Coated Fabrics," ASTM International, West Conshohocken, PA, 2007, [www.astm.org](http://www.astm.org).